



City of Edina

Construction Update No. 3
SPECIAL NOTICE OF TEMPORARY SCHOOL BUS STOPS
Country Club Area Sewer, Water, and Street Reconstruction
Project
City Improvement No. A-213 and A-214

April 15, 2009

Palda will systematically close most of the street intersections in the project area north of Bridge Street to install the brick paver crosswalks (crosswalk) between early May and mid-June. These closures will occur in 6 phases as shown in the map included with this Update titled School Bus Stops and Parking Restrictions. Phase 1 will begin in early-May and Phase 6 will end in mid-June. The phasing will create some temporary long cul de sacs in which school buses are unable to turn around. However, emergency vehicles can still access the project area because if necessary they will destroy a crosswalk under construction to reach an emergency.

Temporary School Bus Stop Locations for Children in the Entire Project Area

With input from the City, school bus operators for Edina Public Schools (EPS) and Breck and Blake schools have decided as much as possible to avoid traveling the north-south streets through all 8 Stages of project area with their school buses for the balance of the 2008 / 2009 school year.

Effective Monday morning April 20 EPS will pick up children from all 8 Stages of the project area at only the temporary school bus stop locations shown on the map with the following caveats.

- During only the week of April 20, EPS will relocate the temporary school bus stop from Arden Avenue at Bridge Street to Bruce Avenue at Bridge Street.
- During only Phase 1 and 4 crosswalk construction, EPS will relocate the temporary school bus stop from Browndale Avenue at Bridge Street to Moorland Avenue at Bridge Street.
- During only Phase 4 crosswalk construction, EPS will relocate the temporary school bus stop from Browndale Avenue at Sunnyside Road to Moorland Avenue at Sunnyside Road.

The parking restriction along Bridge Street east of Browndale Avenue is necessary to provide access to both emergency vehicles and the buses. We will provide exact dates for the Phase 1 and 4 temporary school bus stop relocations as the Phase 1 and 4 crosswalk construction start dates become better known. Please have your children show up at their regularly scheduled pick up time at the temporary school bus stop closest to your home.

April 20 also coincides with the closure of the following streets due to Palda's utility reconstruction operations.

City Hall

4801 WEST 50TH STREET
EDINA, MINNESOTA, 55424-1394

www.cityofedina.com

952-927-8861
FAX 952-826-0390
TTY 952-826-0379

- Browndale Avenue between West 50th and Bridge Street
- Arden and Moorland Avenues and Edina Boulevard between Country Club Road and Bridge Street and
- Country Club Road west of Wooddale Avenue

If your child attends Blake school, please contact their transportation office to find out how Blake school intends to handle these street closures and their impacts on their particular bus stops.

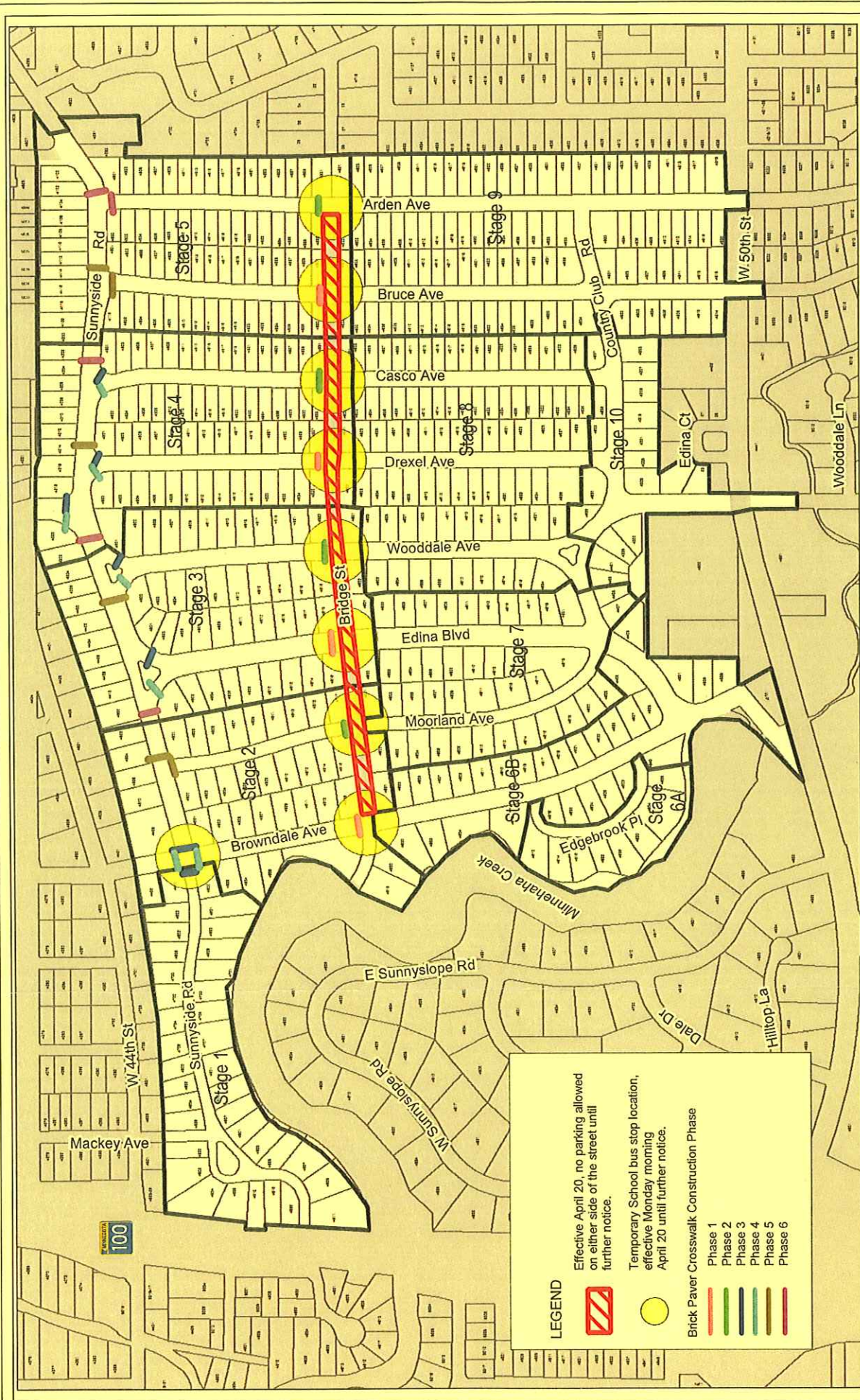
If your child attends Breck school, please watch for a letter from Breck School regarding their bus stops.

Call or e-mail me at SEH with your questions and concerns, 952.912.2633 and cmillner@sehinc.com.

Sincerely,



Chad Millner, SEH



LEGEND

Effective April 20, no parking allowed on either side of the street until further notice.

Temporary School bus stop location, effective Monday morning April 20 until further notice.

Brick Paver Crosswalk Construction Phase

- Phase 1
- Phase 2
- Phase 3
- Phase 4
- Phase 5
- Phase 6

FILE NO.
AEDINA0503
DATE
4/15/09

SCHOOL BUS STOPS AND
PARKING RESTRICTIONS

COUNTRY CLUB AREA
SEWER, WATER AND STREET RECONSTRUCTION

EDINA
MINNESOTA

